

RECORDED **APR 26 1973** AT 10:53 ~~W.C.L.O.C.~~ *A.*

RECEPTION NO. **286271** JOHN B. HUISMAN, Recorder

CERTIFIED LAND CORNER RECORDATION

DESCRIPTION OF CORNER EVIDENCE FOUND, AND ORIGINAL RECORD (If known)

LOCATION

Found a 5/8" dia. rebar set flush with pavement.

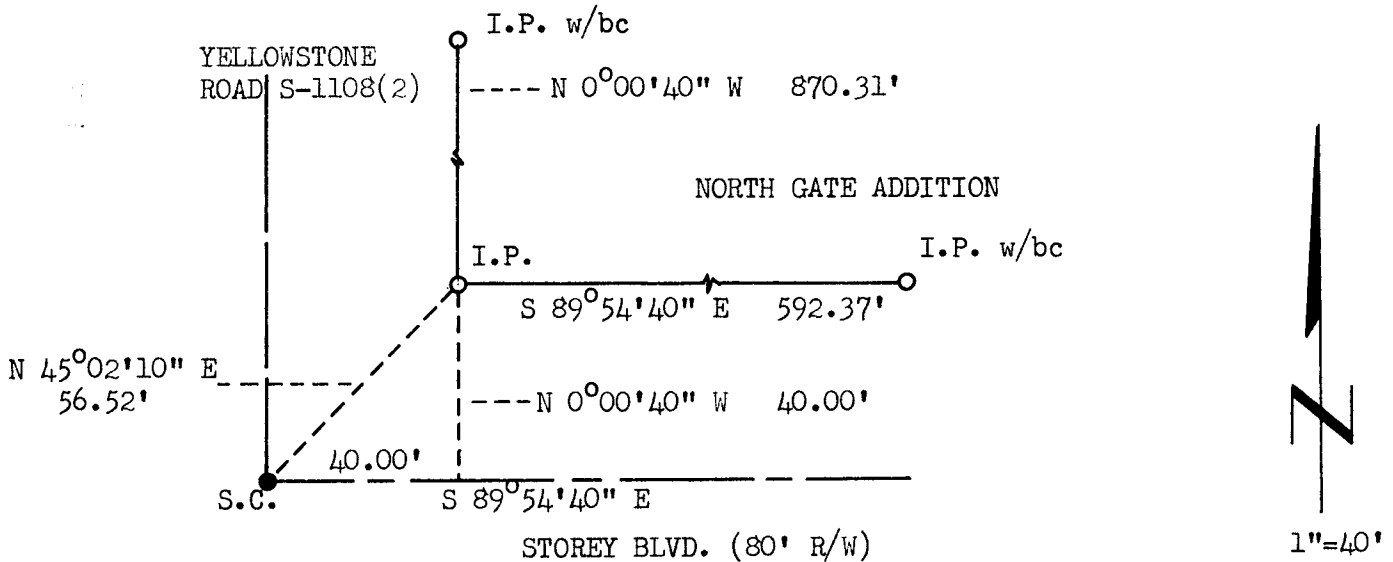
S.13 S.18
S.24 S.19
T.14N.
R.67W., R.66W.
6th P.M.

DESCRIPTION OF MONUMENT AND ACCESSORIES ESTABLISHED TO PERPETUATE THE ORIGINAL LOCATION OF THIS CORNER:

At the corner: Not remonumented.

Accessories: A 1 1/2" dia. x 30" long iron pipe with brass cap bears N 45°02'10" E, 56.52 feet distant.

SKETCH, WITH COURSE AND DISTANCE TO ADJACENT CORNER IF DETERMINED IN THIS SURVEY. (May Sketch or Paste Reproduction on Reverse Side.)



Brass cap set 4" above ground

Brass cap stamped:

CORNER

LS 519 1973



R.L. Hudson certify that I have carefully performed or reviewed the work done in the program of corner as reported on this recordation form and approve the same.

R.L. Hudson
Signature of Surveyor

Wyoming L.S. No. 519
Registration No.

STATE OF WYOMING,
Office of Clerk and Recorder,
County of Laramie

This "corner record" was filed for record on the 26 day of April, 19 73, was noted on the cross-index plat and is assigned page No. _____, in book No. _____.

John B. Huisman
County Official TUD
TN

Cross Index No. _____	T. _____	R. _____	Mer. _____
_____	T. _____	R. _____	Mer. _____
_____	T. _____	R. _____	Mer. _____
_____	T. _____	R. _____	Mer. _____
_____	T. _____	R. _____	Mer. _____
_____	T. _____	R. _____	Mer. _____
_____	T. _____	R. _____	Mer. _____

286271

Photographed _____

Indexed _____

Posted _____

The State of Wyoming }
County of Laramie } SS

This instrument was filed for record
at 12.53 o'clock P. M. on the
26 day of August
A. D. 19 33 and duly recorded in
Book _____ on page _____



County Clerk & Ex-Officio Registrar of Deeds
By _____ Deputy